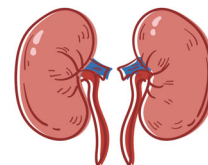
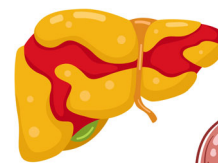


Unraveling Interconnections:



Metabolic Syndrome as the Driver of Cardio-renal-hepatic Disorders

September 20, 2025

Lumina Resort, Wrightsville Beach, NC

ACPE# 0088-0000-25-187-L01-P/ T, ACPE / AAPA 5 Hours



[Click here to register](#)

Registration \$100, preceptors and alumni \$75

Enter code **earlybird** by August 15 to save \$10

Description: *This interprofessional CE/CME activity is designed to highlight the central role of metabolic syndrome in the development of cardiovascular, renal, and hepatic diseases. Participants will explore the complex pathophysiology of metabolic disease that connects these systems, assess current and emerging pharmacologic therapies, and develop integrated treatment strategies using medications and lifestyle medicine. This workshop also will empower healthcare providers to recognize patients at risk for the development of complications of metabolic syndrome and provide collaborative tools for working with patients to minimize these risks.*

Learning Objectives:

1. Explain the associated pathophysiologic and lifestyle risks for adults with metabolic syndrome for the development of cardiovascular, renal, and hepatic diseases.
2. Discuss new and emerging pharmacologic therapies for the management of complications of metabolic disease.
3. Recommend a treatment plan for patients who present with cardiorenal metabolic disease.

Target Audience: Pharmacists, PAs, nurses, pharmacy technicians, and providers with an interest in cardio-renal-hepatic disorders

Tentative Agenda

8:30 am Registration and breakfast

9:00 am Welcome/introductions

9:15-10:15 am ***Metabolic disease as the driver of cardio-renal-hepatic disorders***

Donald Eagerton, MD, Carolina Health Specialists,
Myrtle Beach, SC

10:15-10:45 am Exhibit Hall

10:45-11:00 am Break

11:00-12:00 pm ***GLP-RA overview, use in metabolic disorders, and emerging products***

Allison Presnell, PharmD, BCACP, BC-ADM, CPP,
Clinical Assistant Professor, Campbell University College
of Pharmacy & Health Sciences, Duke Family Medicine

12:00-1:00 pm Lunch

1:00-2:00 pm ***SGLT2 inhibitors overview, use in HF and CKD***

Anita Yang, PharmD, CPP, BCACP, Cardiorenal
Metabolic Risk Reduction, UNC Hospitals

2:00-3:00 pm ***MASLD management strategies***

John Poulos, MD, Gastroenterologist, Fayetteville, NC

3:00-4:00 pm ***Lifestyle Medicine for prevention and treatment of metabolic associated disorders***

Rita Brewer PA-C, DipACLM, DFAAPA, Diabetes
Reversal Coach, Functional Medicine Practitioner

4:00-4:15 pm Review and Q & A

4:15 Adjourn



Campbell University College of Pharmacy & Health Sciences is accredited by the Accreditation Council for Pharmacy Education as a provider of continuing pharmacy education. 0088-0000-25-187-L01-P is accredited for 5 hours of ACPE credit.



This activity has been reviewed by the American Academy of Physician Associates Review Panel and is compliant with AAPA CME Criteria. This activity is designated for 5 AAPA Category 1 CME credits. PAs should only claim credit commensurate with the extent of their participation. Approval is valid from 9/20/2025 to 9/20/2025. AAPA reference number: CME-2014153.